

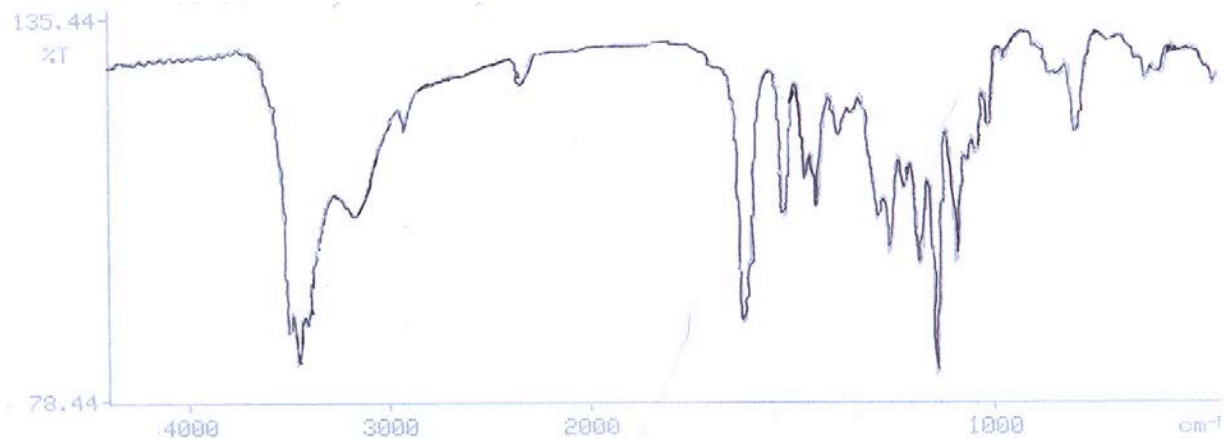
MATERIAL SUPLEMENTAR

Atividades antinociceptivas e anti-inflamatórias do extrato etanólico, das frações e da epicatequina isolada da casca do caule da *Ximenia americana* L. (Oleaceae)

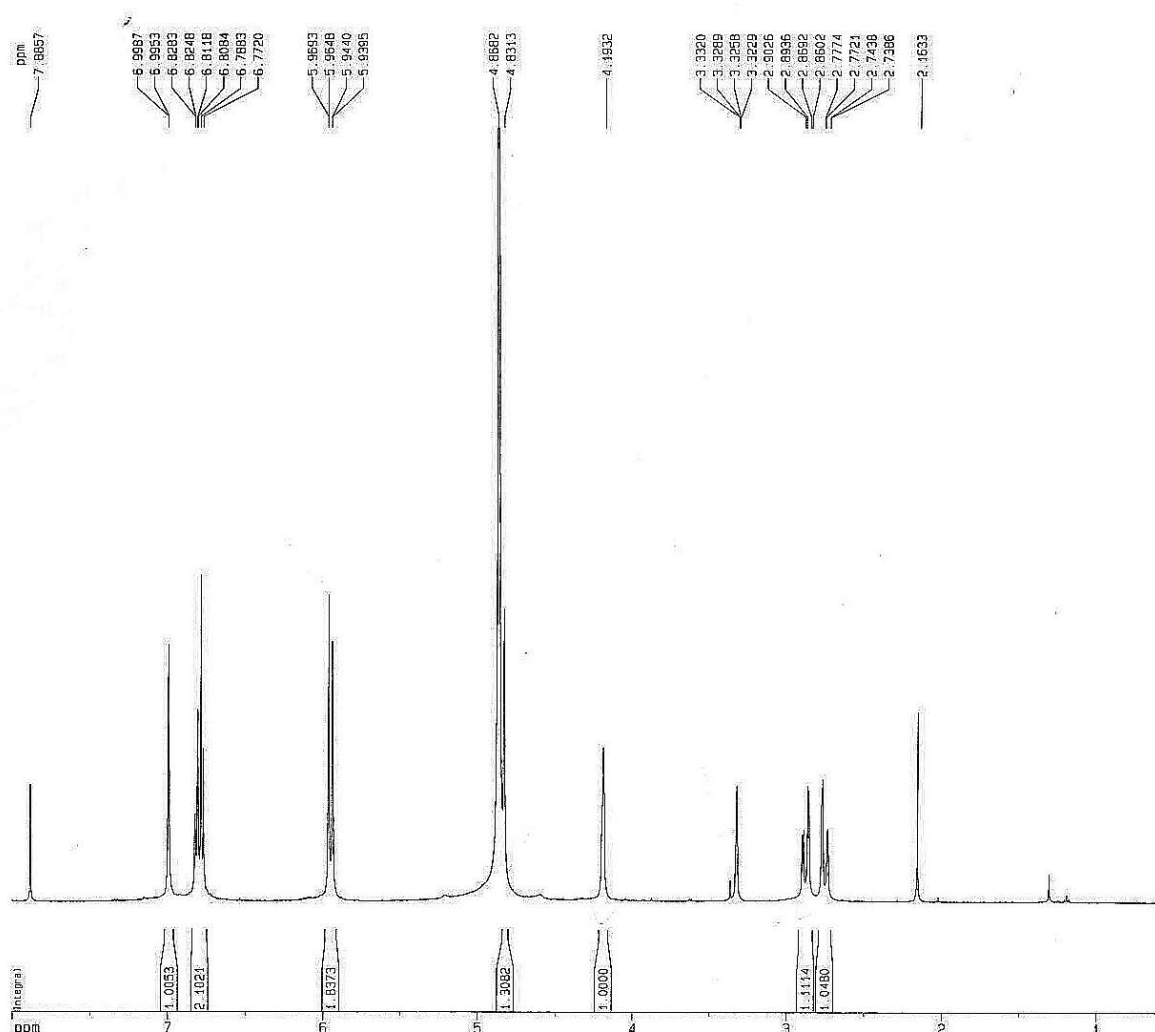
Dias, T. L. M. F., Melo, G. M. A., Da Silva, Y. K. C., Queiroz, A. C., Goulart, H. F., Alexandre-Moreira, M. S., Santana, A. E. G., Uchôa, V. T. *

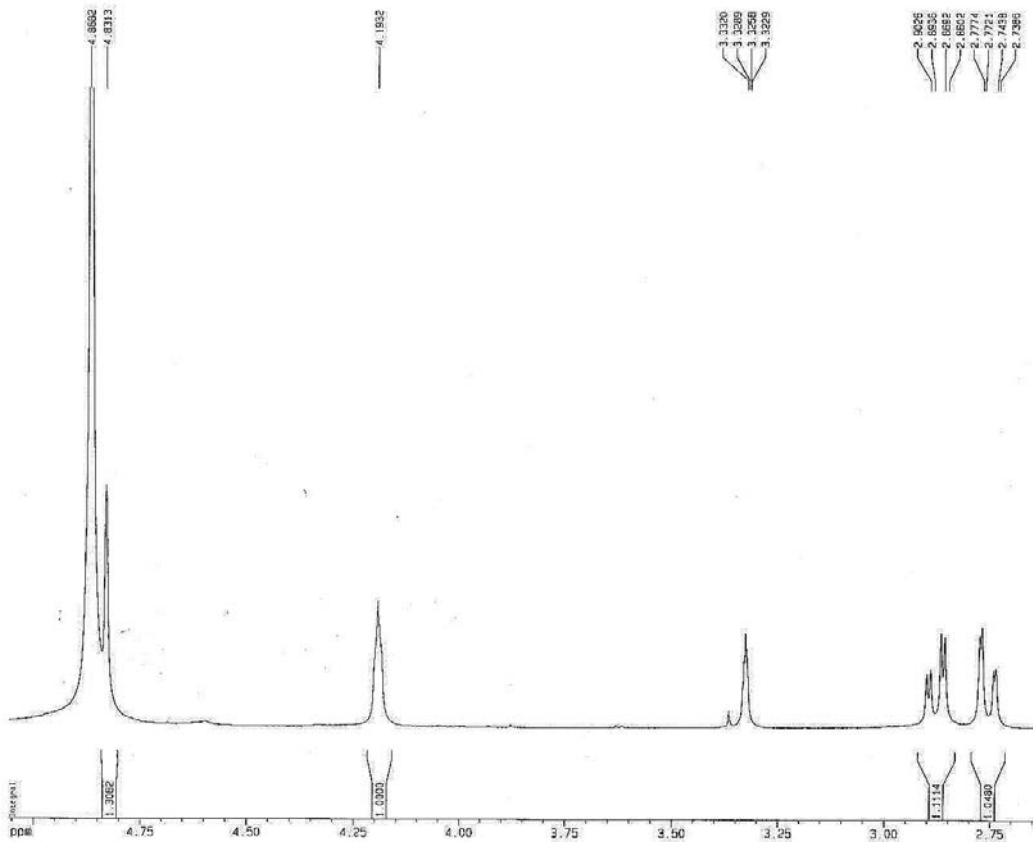
Espectros de RMN e IV

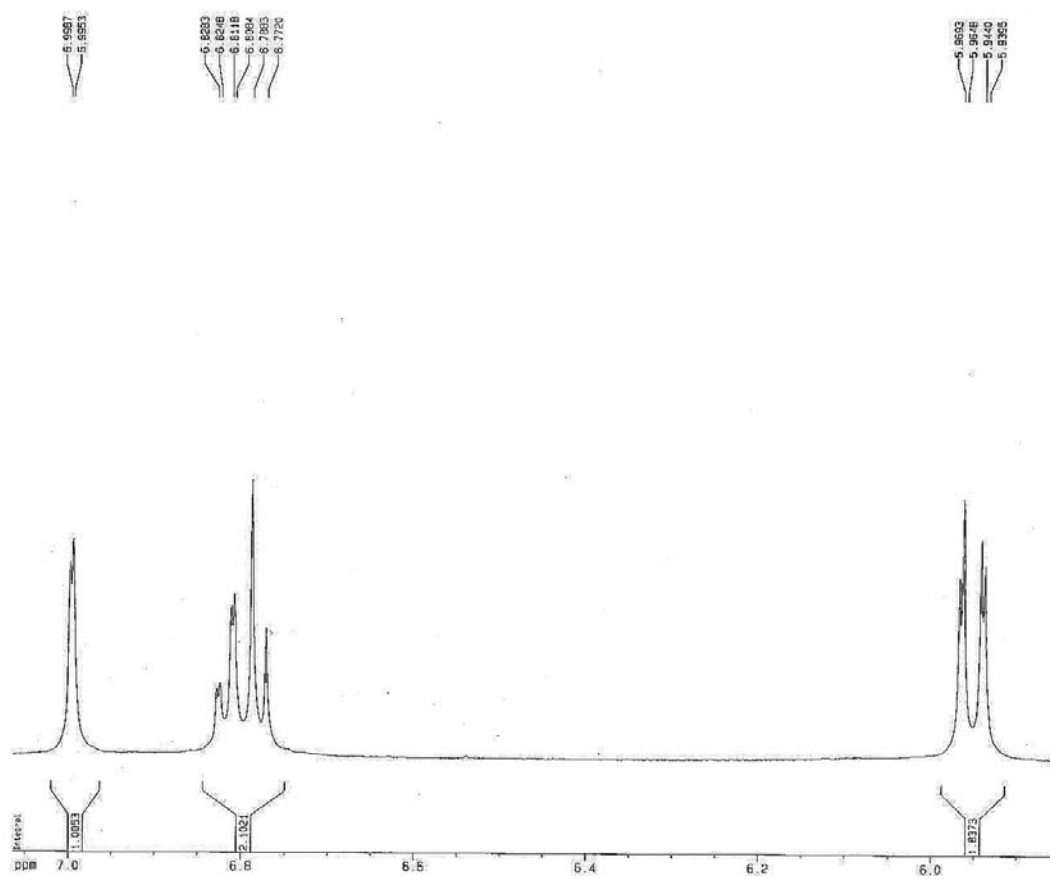
Espectro na região do infravermelho da (-)-epicatequina em KBr



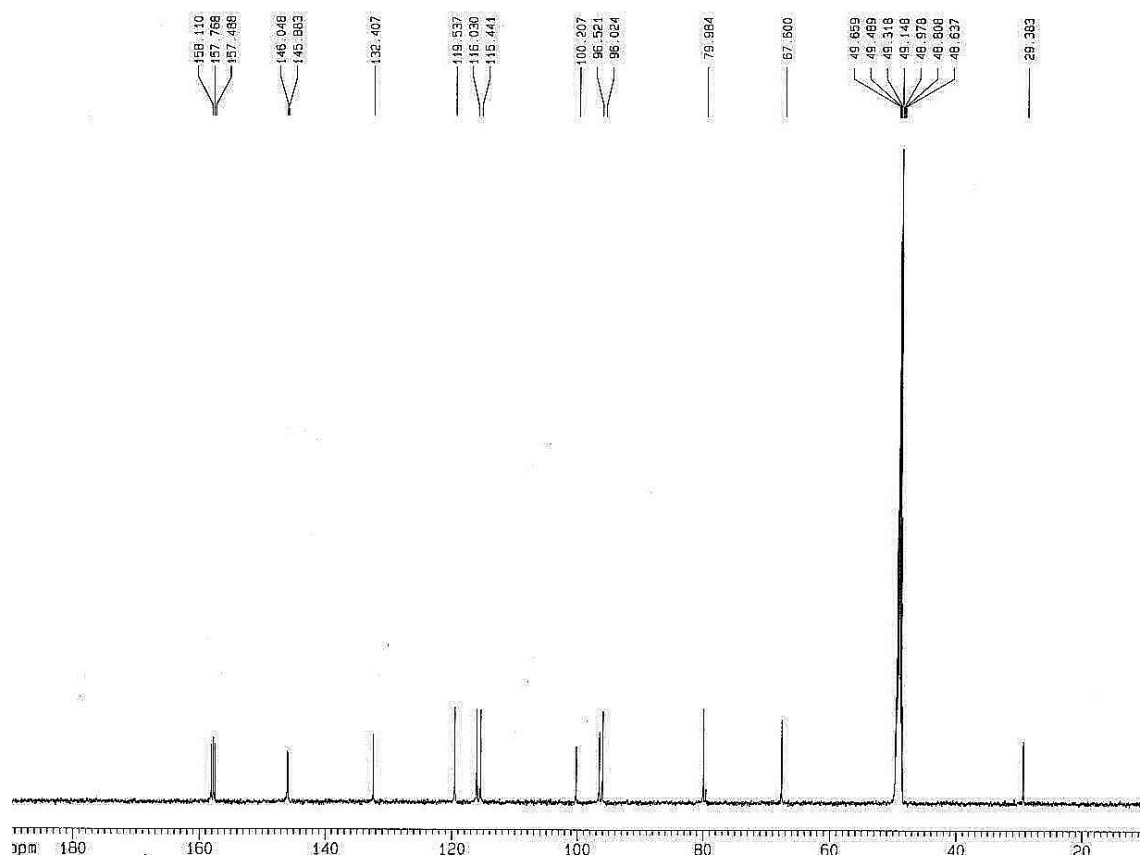
Espectro de RMN¹H (500 MHz, CD₃OD) da (-)-epicatequina



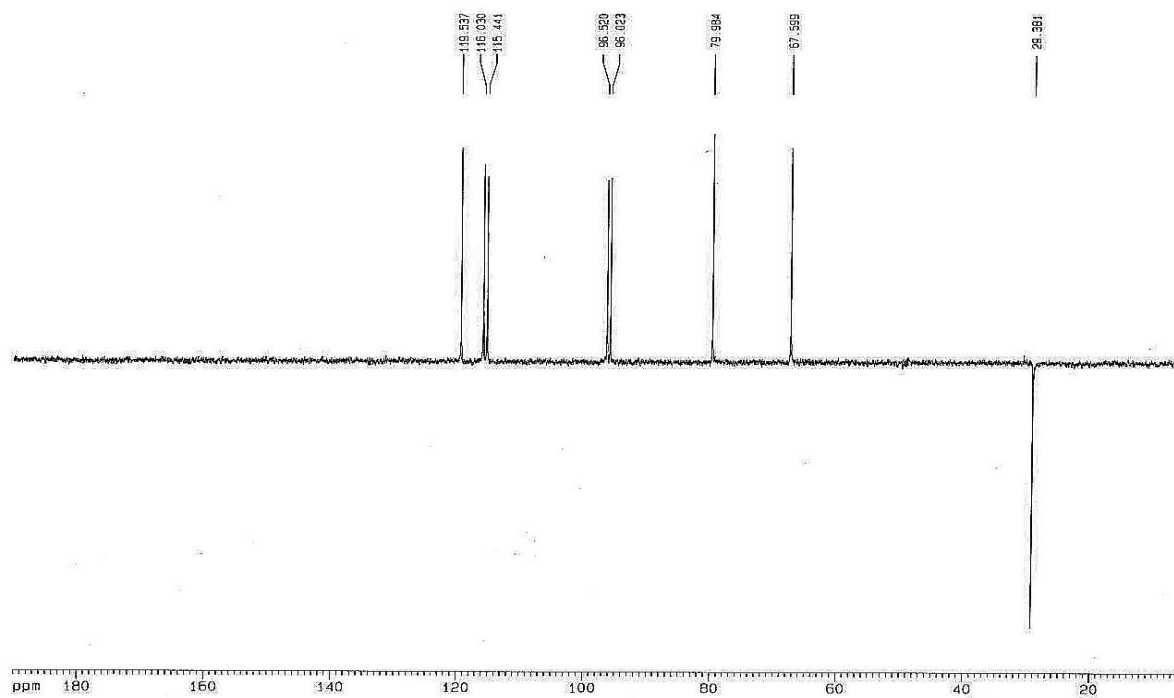




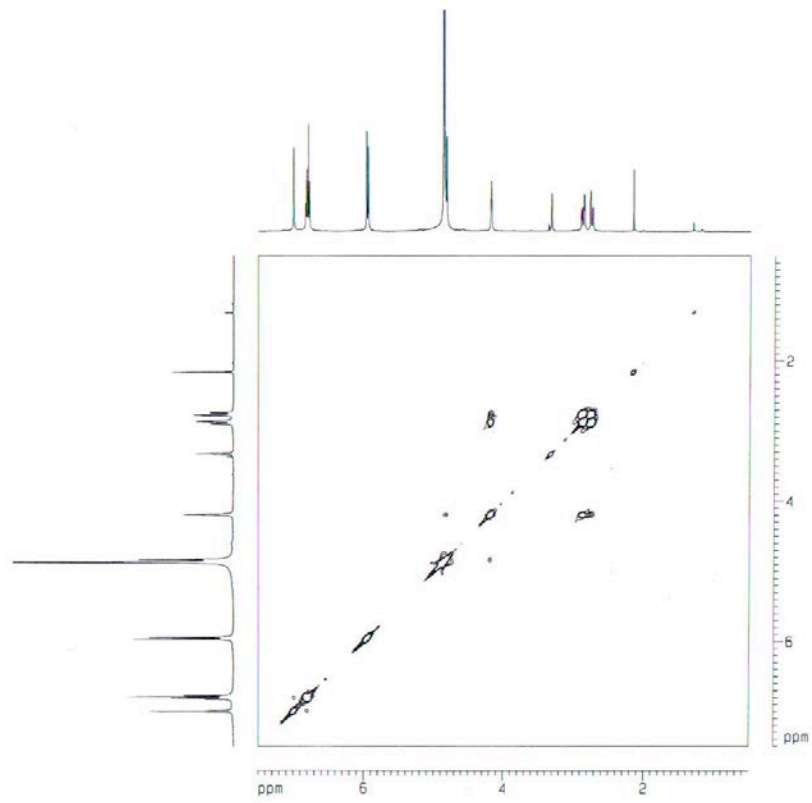
Espectro de RMN¹³C (125 MHz, CD₃OD) da (-)epicatequina



Espectro de DEPT 135° (125 MHz, CD₃OD) da (-)-epicatequina



Espectro de COSY (¹H: 500 MHz, CD₃OD) da (-)-epicatequina



Espectro de HMQC e HMBC (^1H : 500 MHz, ^{13}C : 125 MHz CD_3OD) da epicatequina

